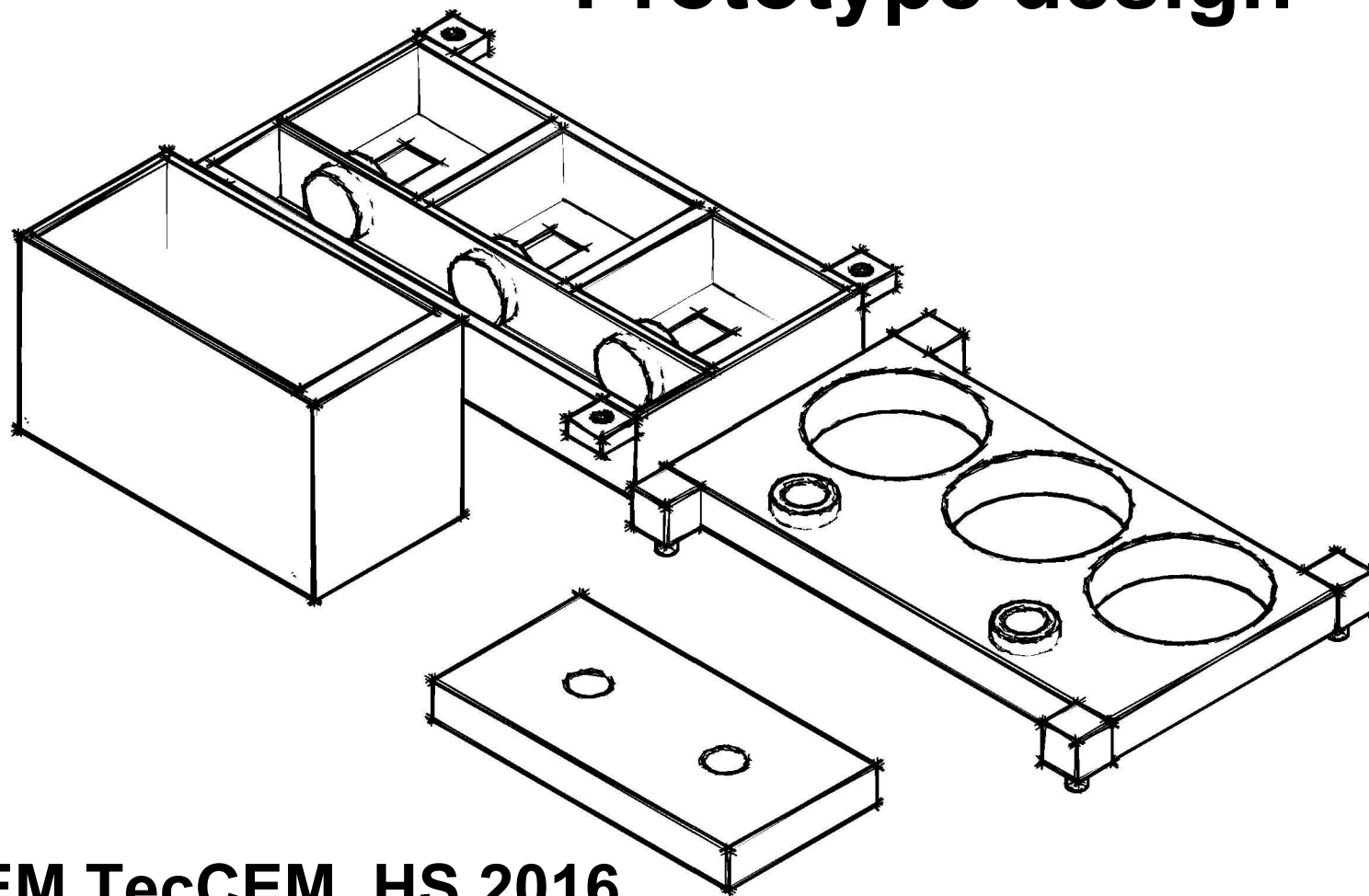
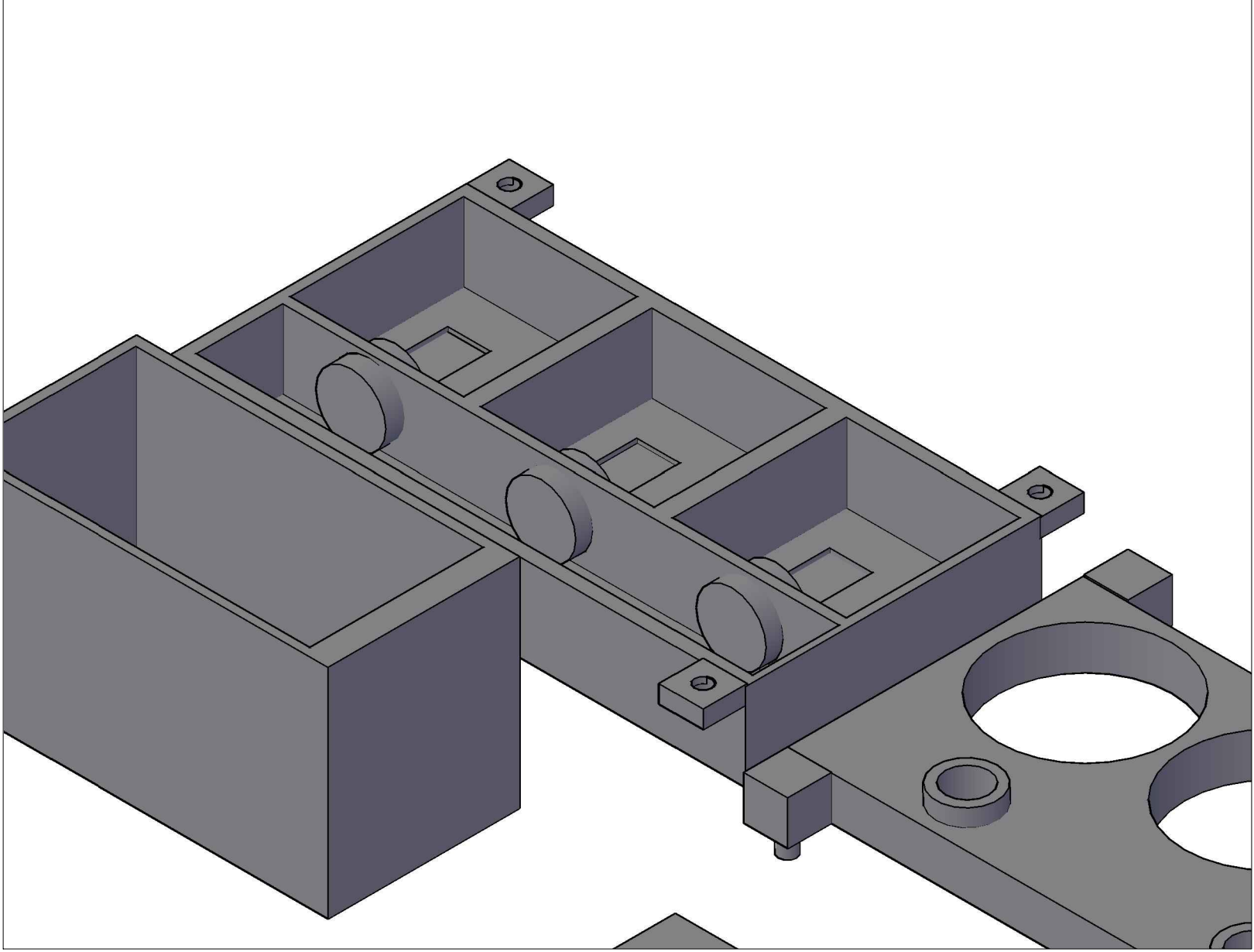
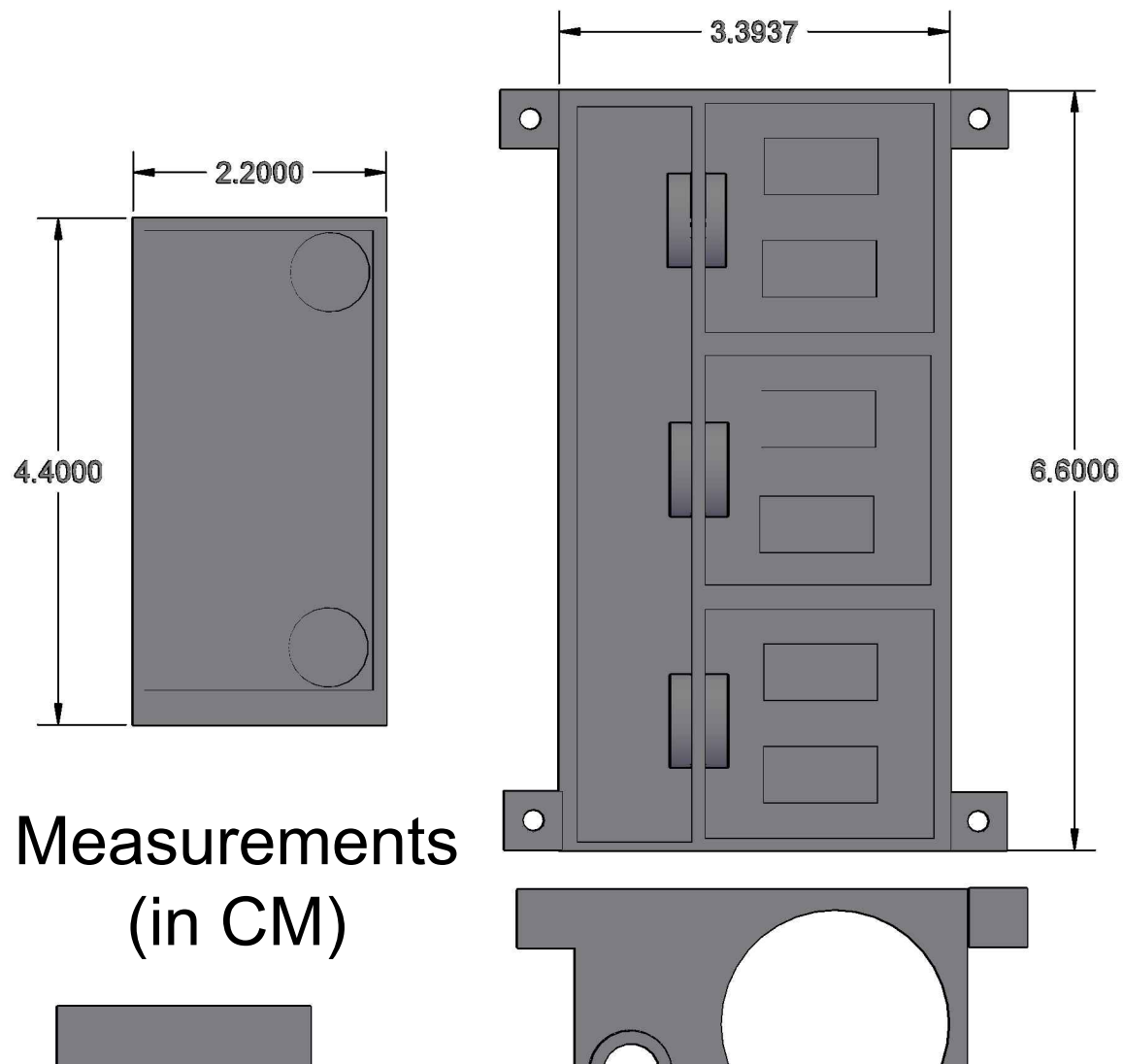


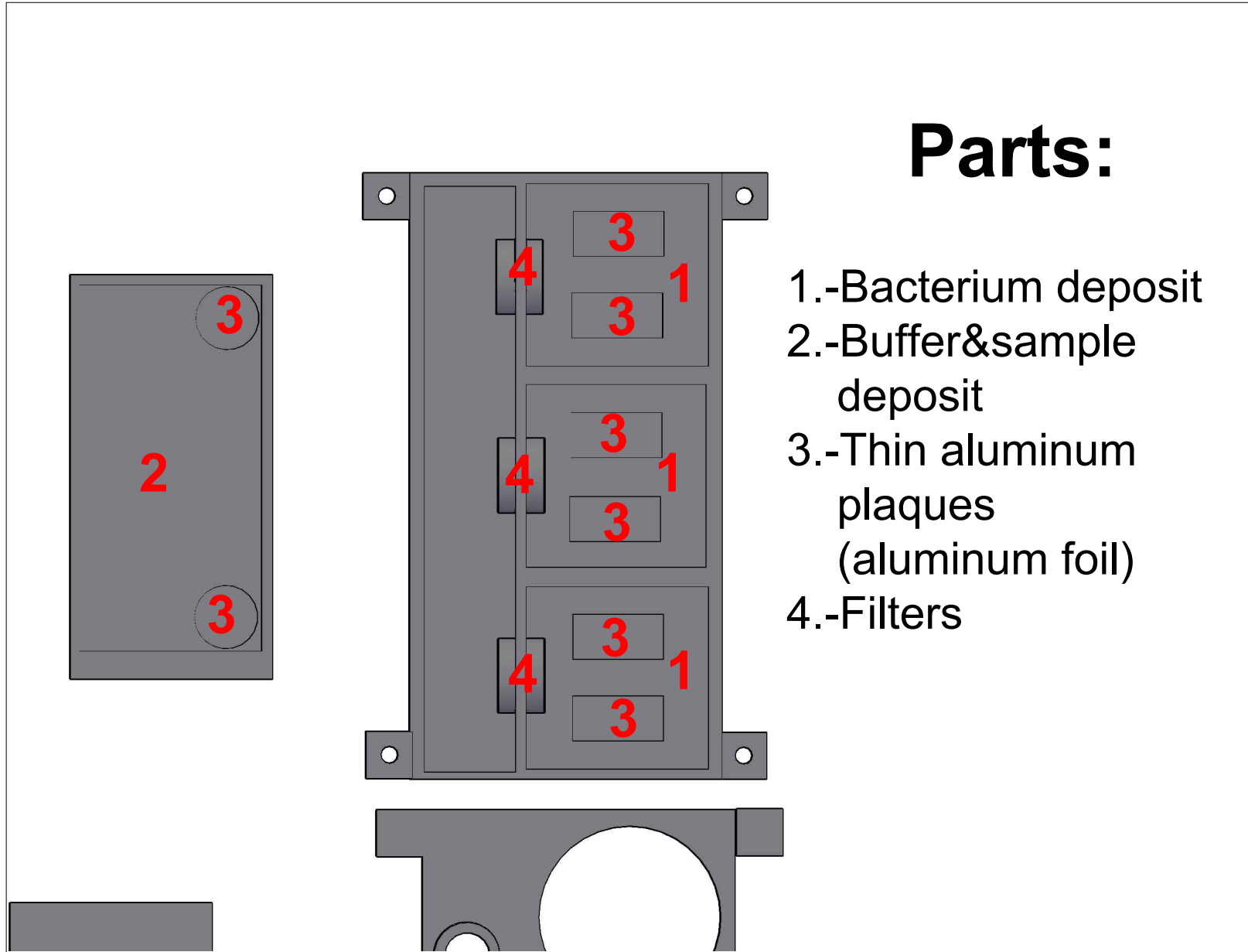
Prototype design

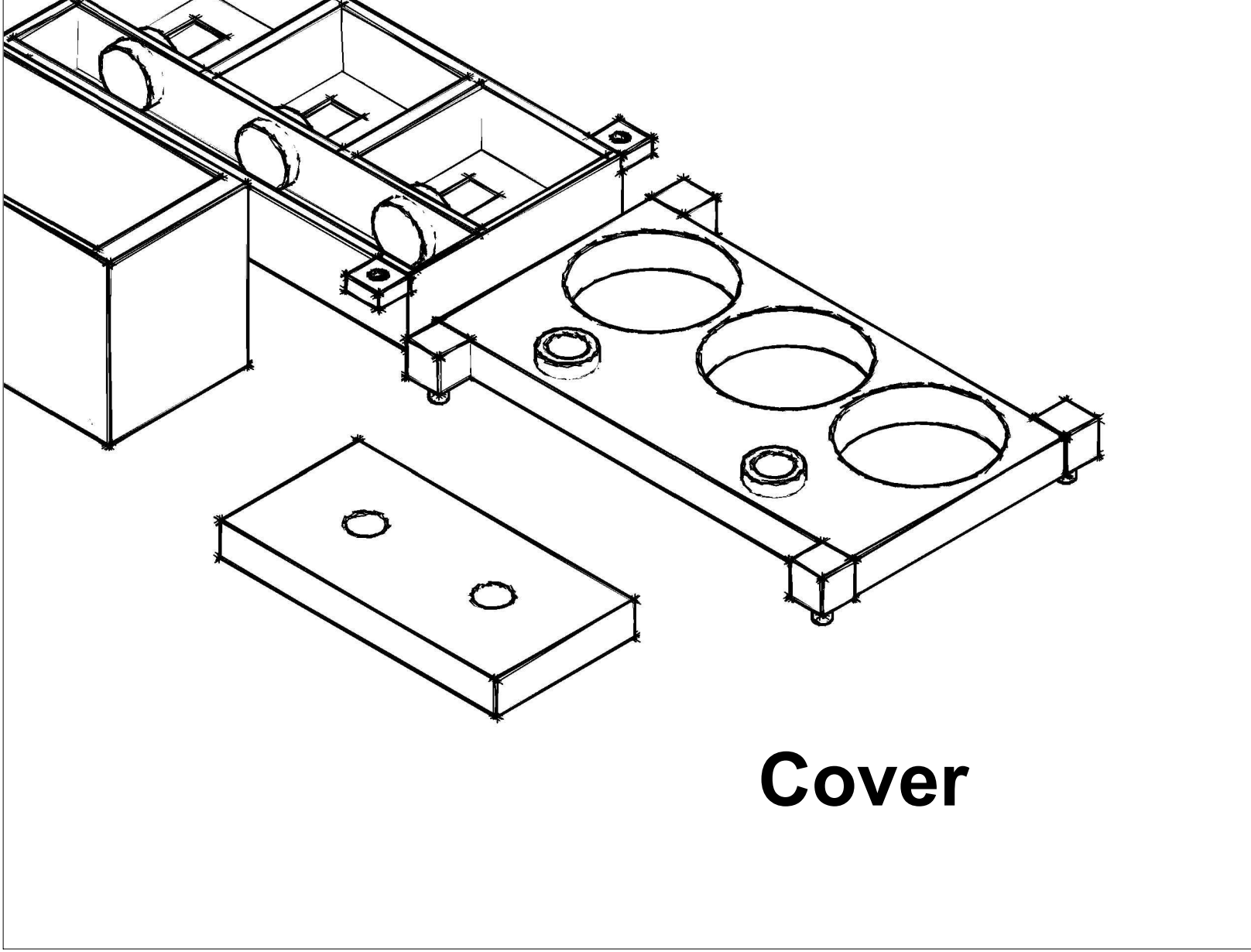


IGEM TecCEM_HS 2016

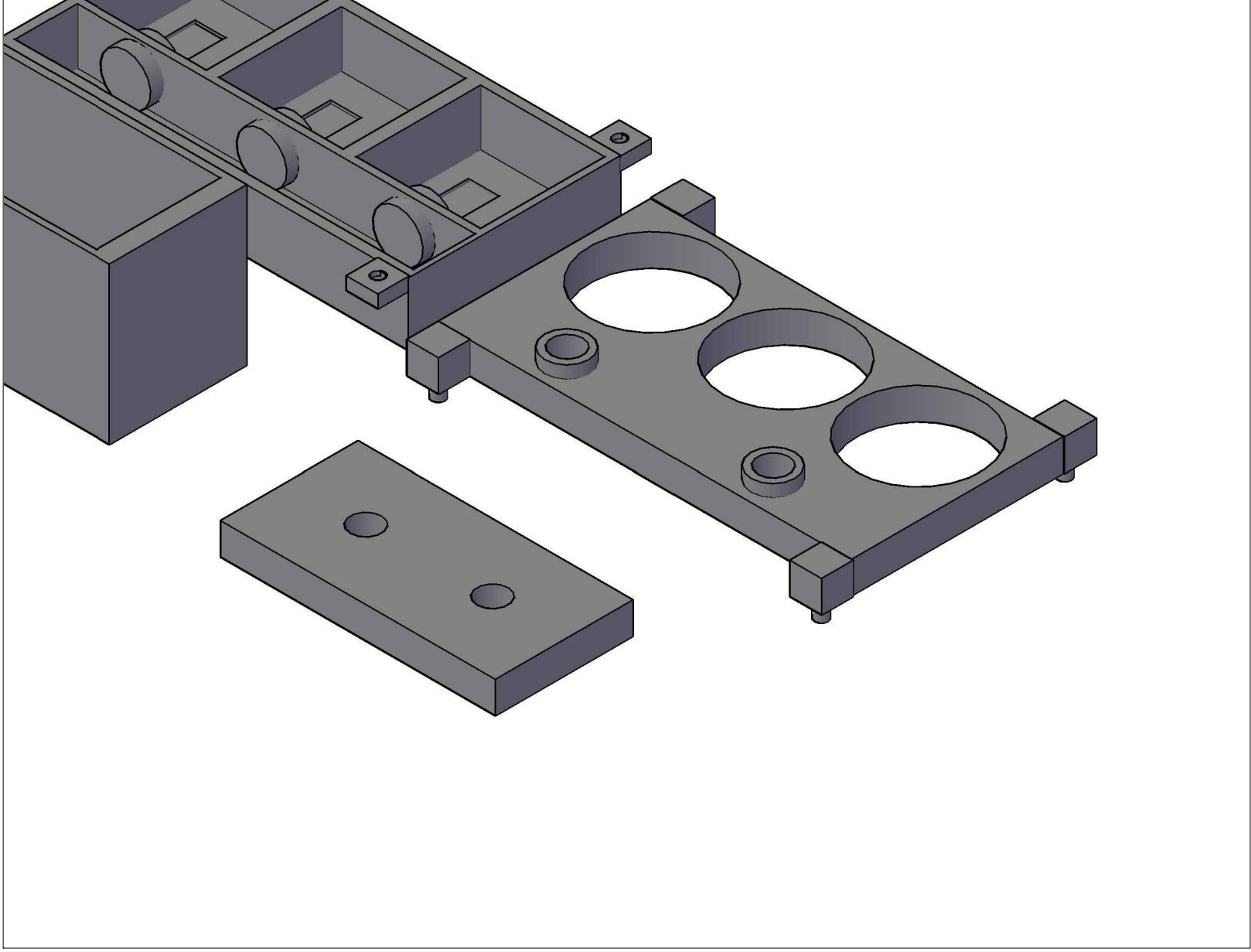


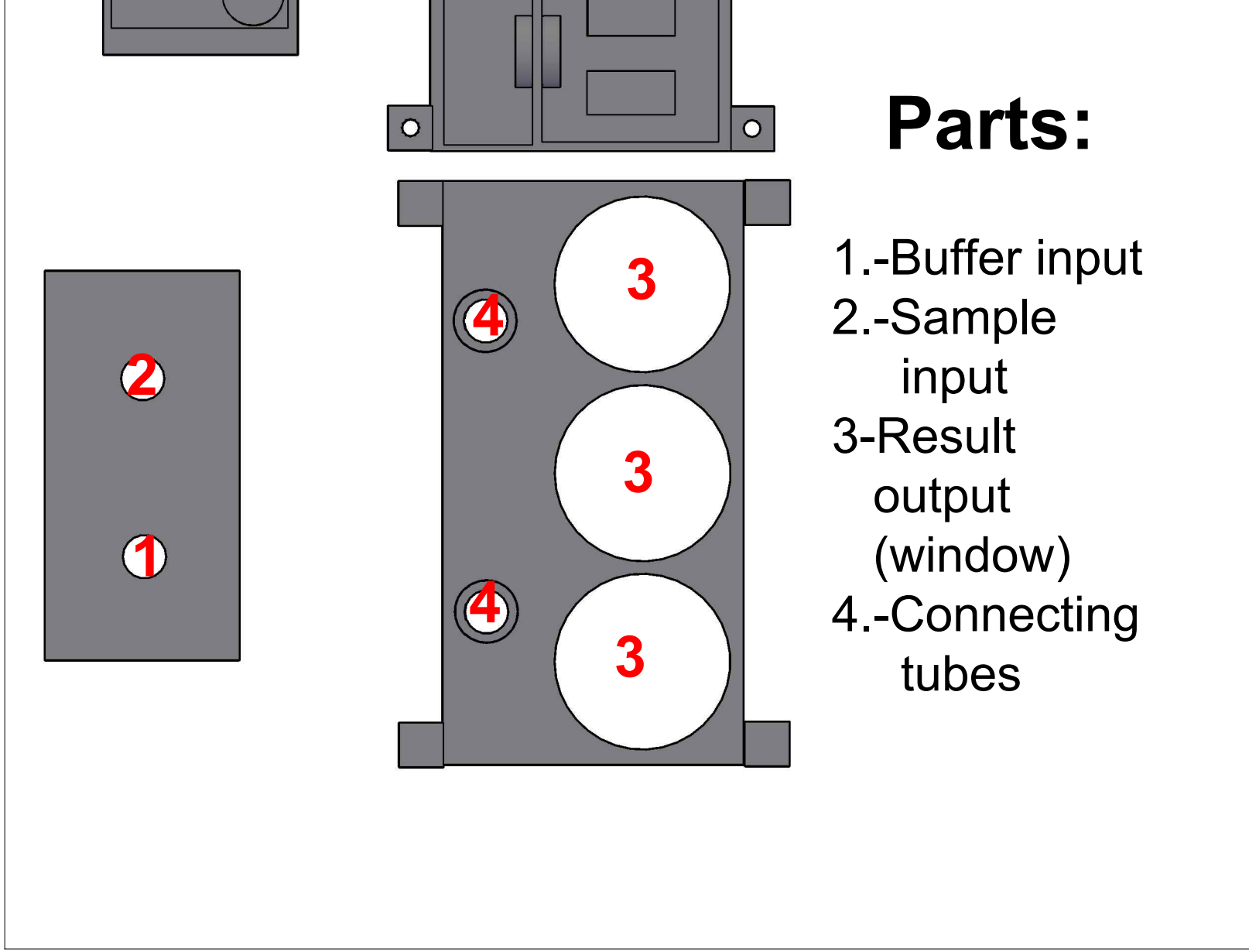


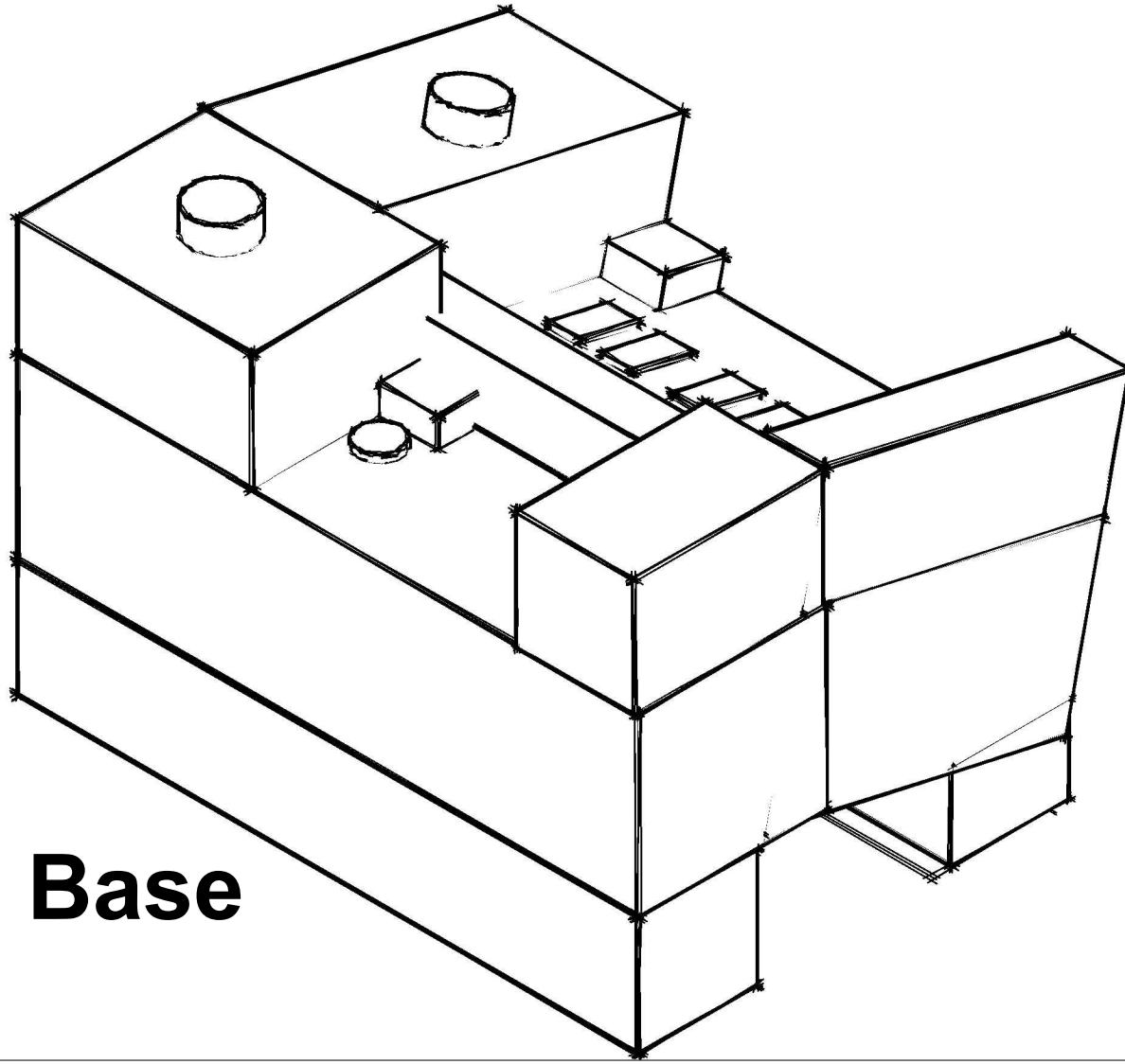




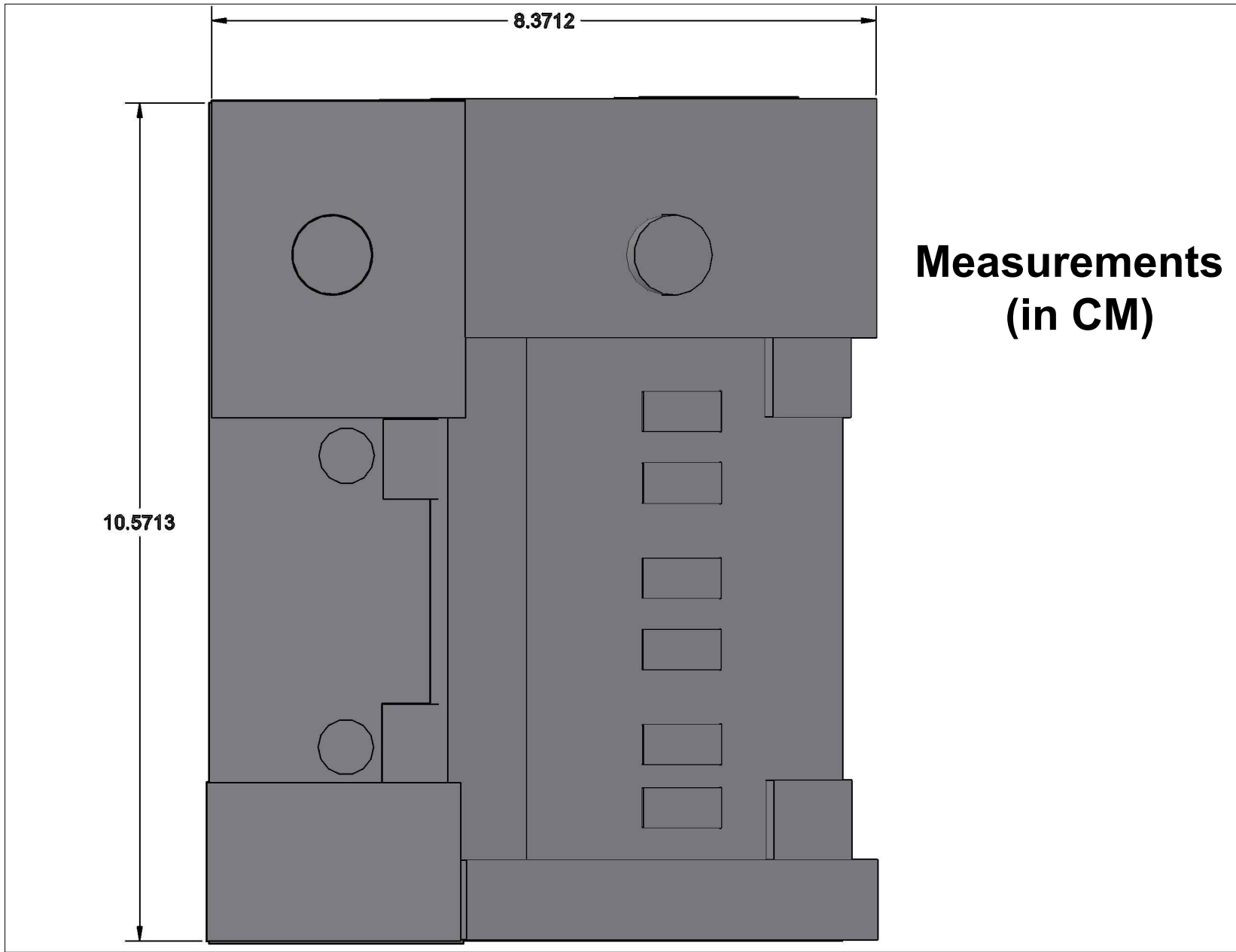
Cover





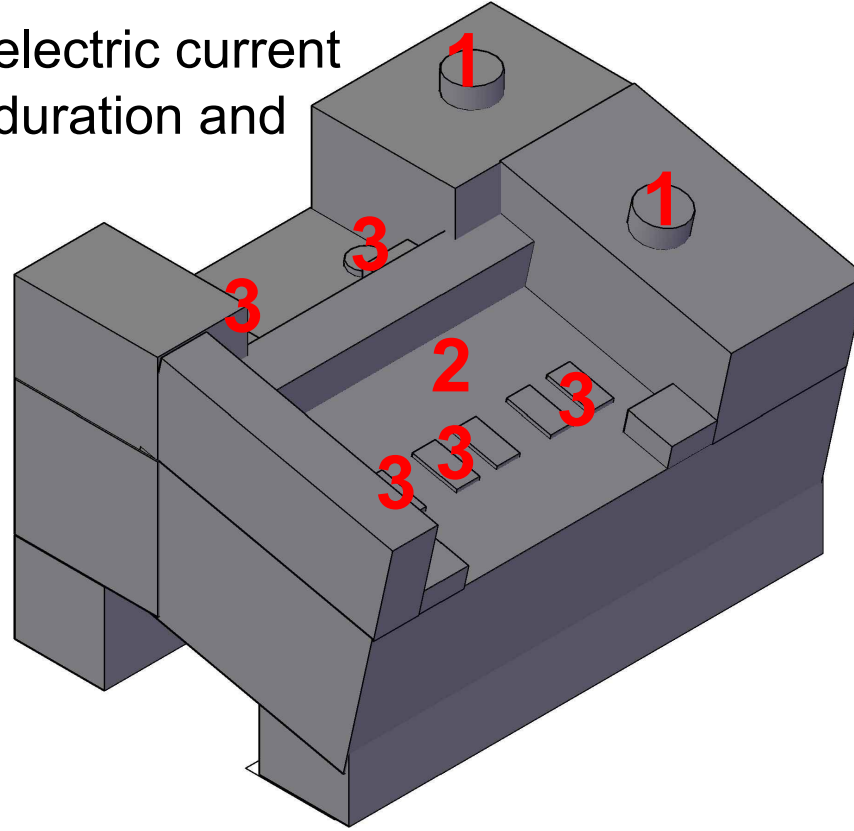


Base

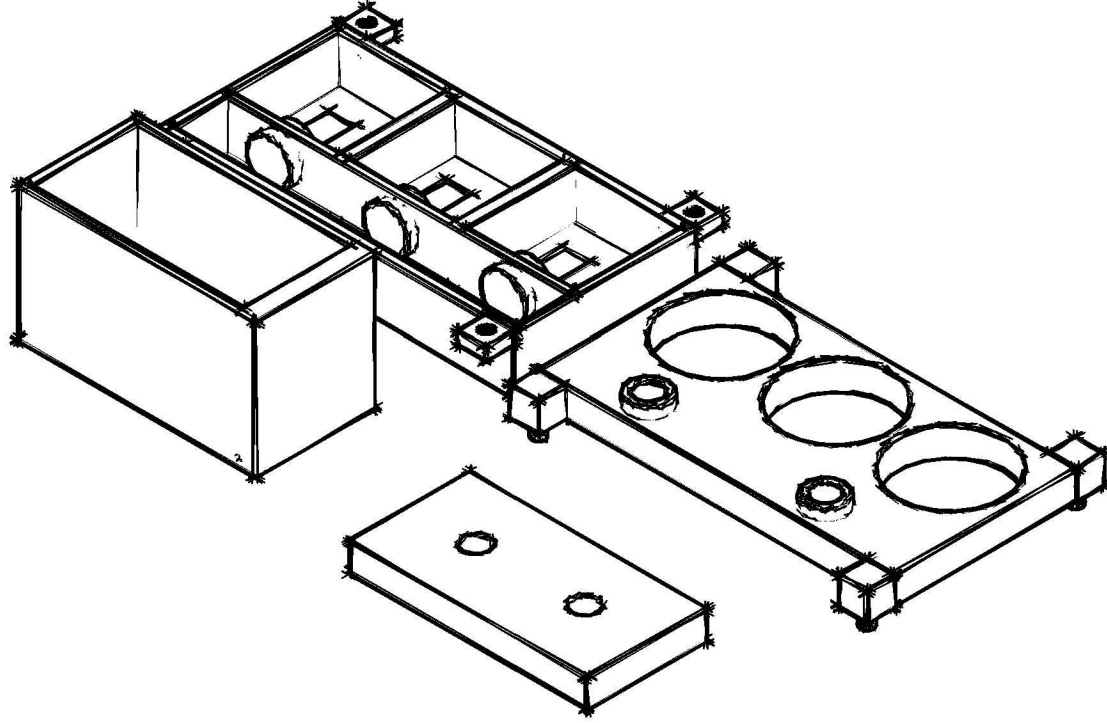


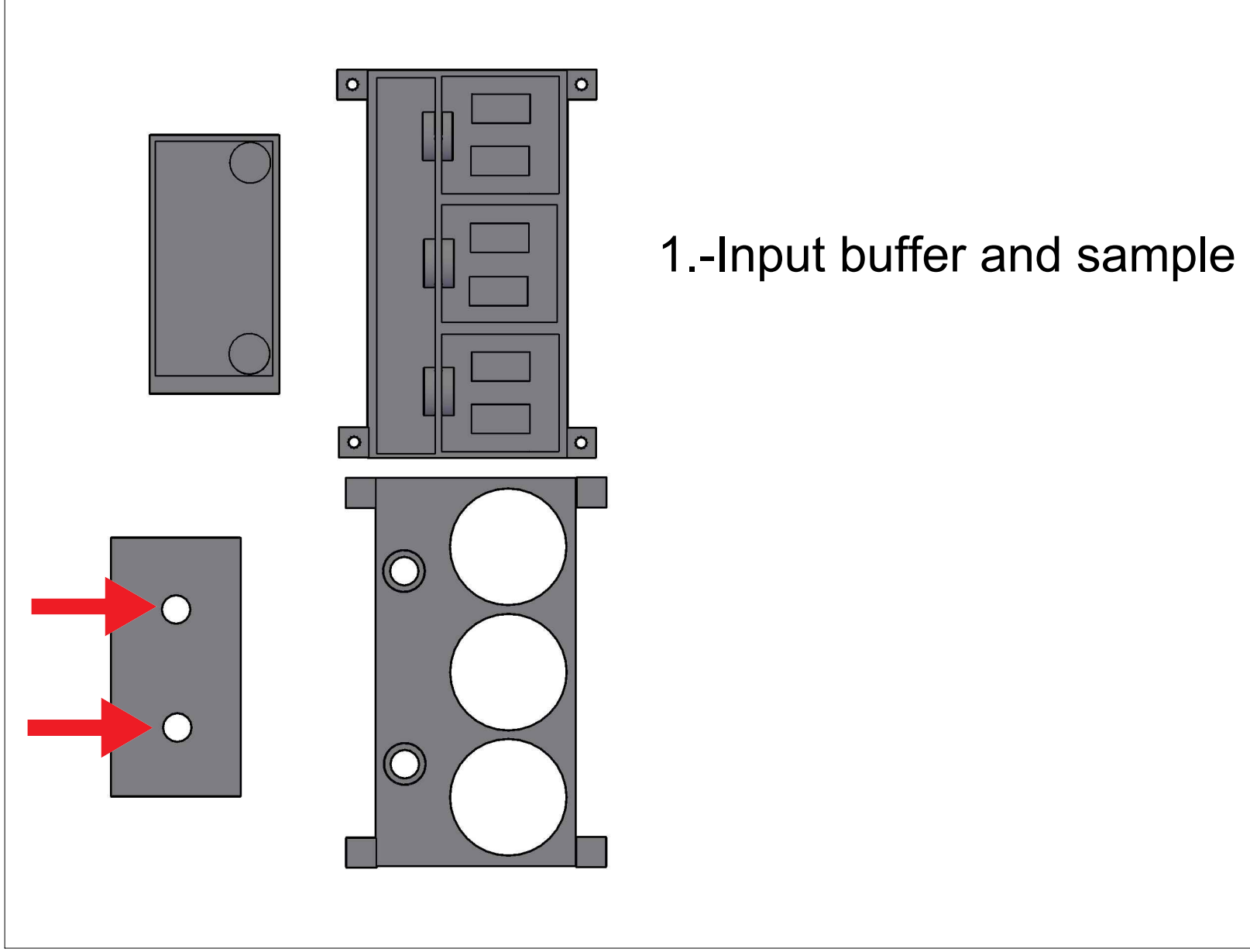
Parts:

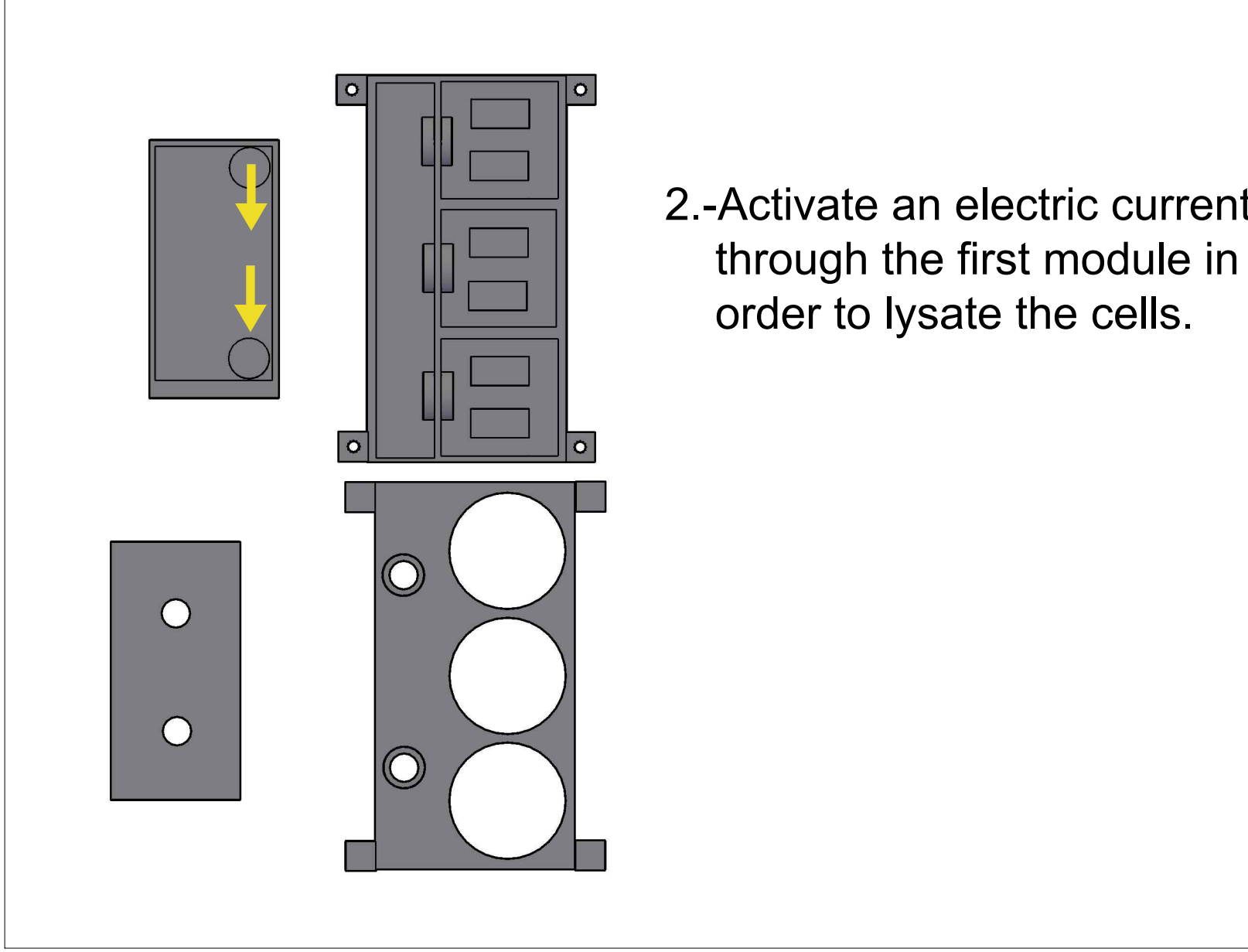
- 1.-Knobs that start an electric current with predetermined duration and voltage.
- 2.-Inclined plane to guarantee fluid flow.
- 3.-Electric connectors.



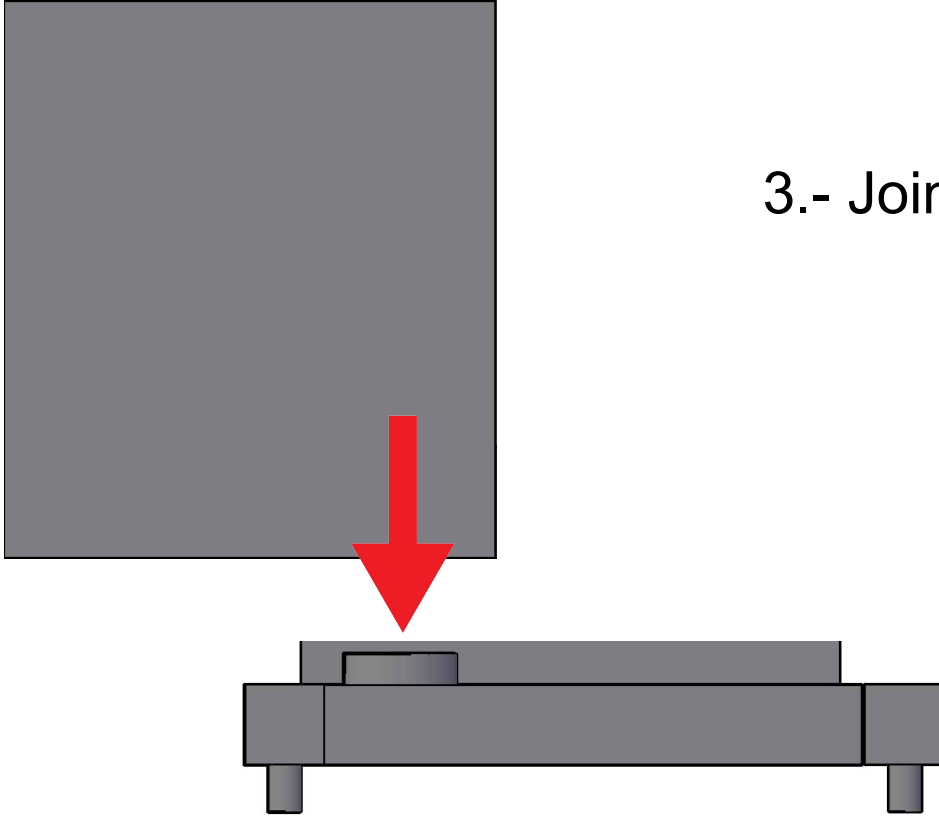
Function

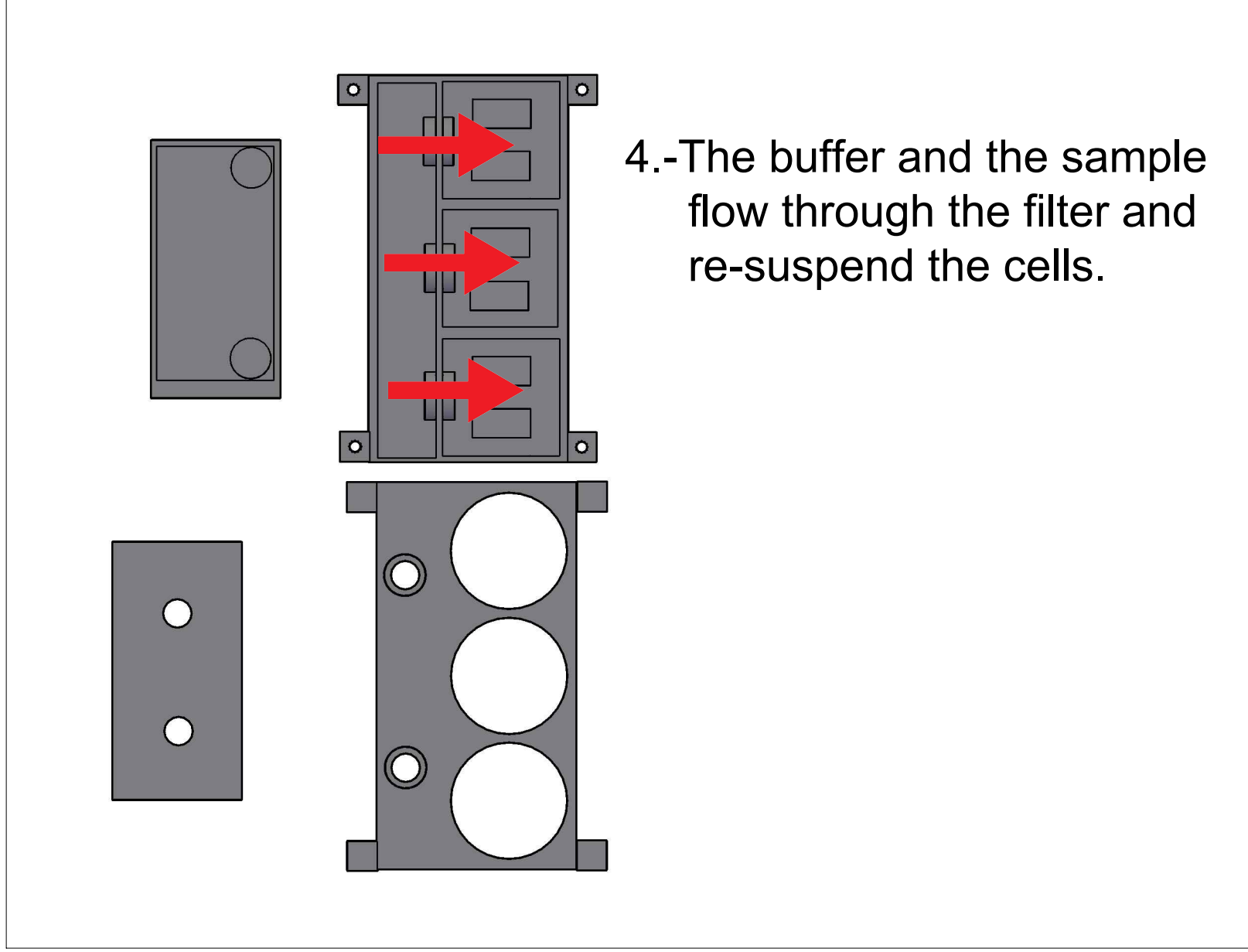


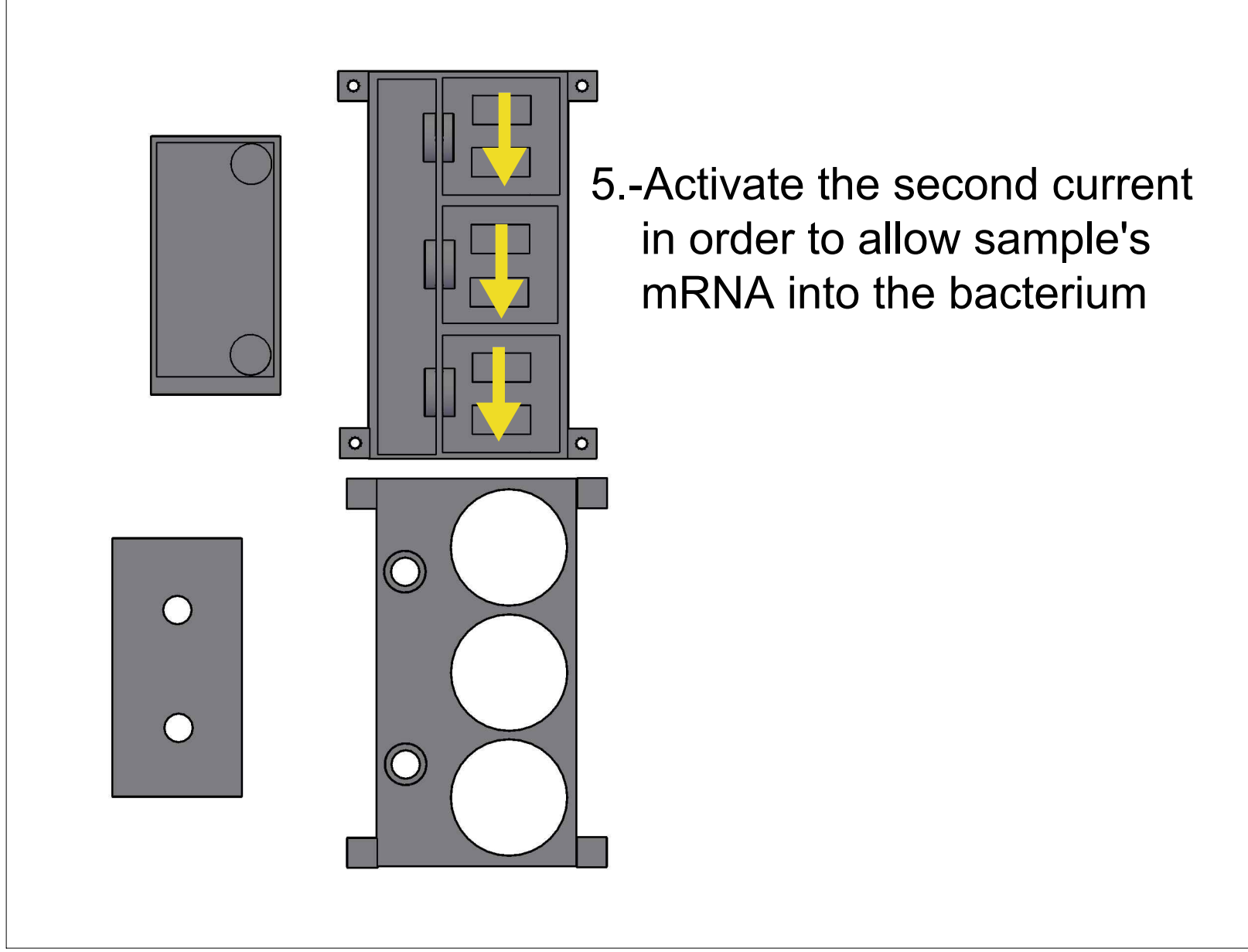


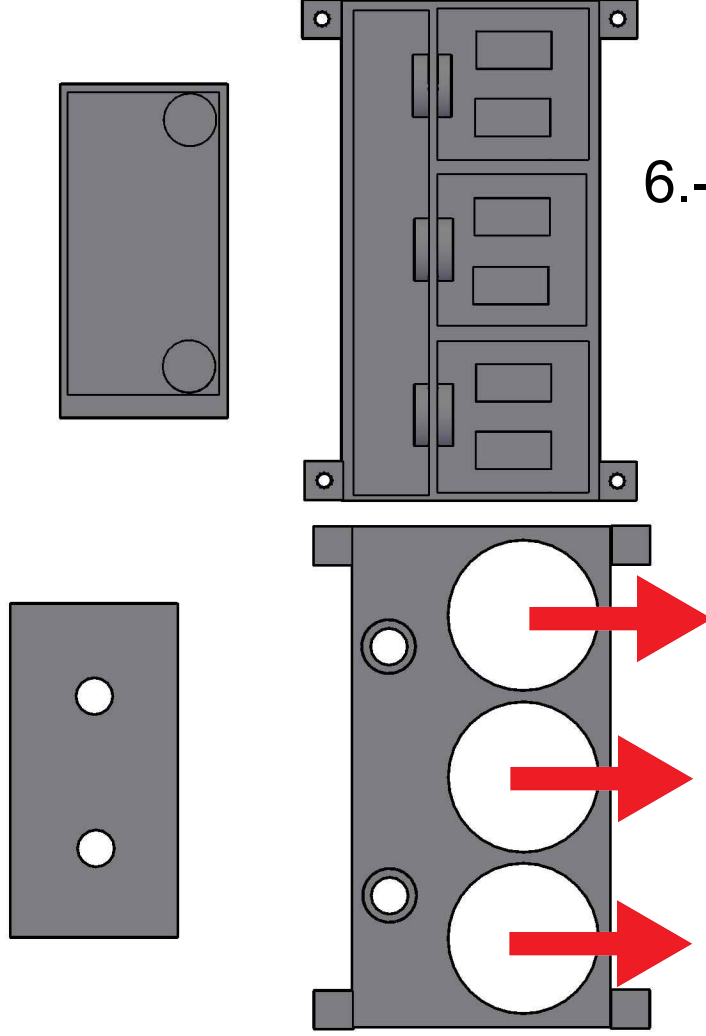


3.- Join the 2 modules









6.-The result will appear as the windows turn red or remain off.